

Succeeding at WMU



WESTERN MICHIGAN UNIVERSITY

Western Michigan University

Western Michigan University

Student Success Services (S3) Motto:

“Asking for help is a sign of strength, not weakness.”



Academic Support Programs

- [Alpha Program](#)
- [Bronco Study Zone](#)
- [College Assistance Migrant Program](#)
- [College of Education and Human Development Student Success](#)
- [College of Health and Human Services Learning Resource Center & Office of Student Engagement & Success](#)
- [Foundation Scholars](#)
- [Kalamazoo Promise Scholars Program](#)
- [Learning Assistant Program](#)
- [Lee Honors College Peer Student Success Team](#)
- [Math Tutor Lab](#)
- [Mentoring for Success Program](#)
- [Military and Veteran Affairs](#)
- [MLK Jr. Student Scholars Academy](#)
- [Peer Academic Success Coaching](#)
- [Peer2Peer](#)
- [Physics Help Room](#)
- [Precollege Programming](#)
- [Reclaim the W](#)
- [Registrar's Office](#)
- [Seita Scholars Program](#)
- [Service Learning](#)
- [Statistics Tutor Lab](#)
- [Transfer Student Services](#)
- [TRIO Future Educator Success Program](#)
- [TRiO Student Success Program](#)
- [Writing Center](#)

wmich.edu/student-services/academic-support

Student Success Services Overview

Student Success Services (S3) provides comprehensive academic support programs and connects students to resources to achieve their academic and personal goals.



**Course Assistant
Program**



**Learning Assistant
Program**



**Peer Academic
Success Coaching**



Peer Navigator Program



Course Assistant Program



- Drop-in course assistance is offered **in-person** at the **BSZ** (Bronco Study Zone) in **Rood Hall** and **Sangren Hall**
- We provide course assistance for over **200 courses**
- Students can go once or 100 times...always included in tuition

<https://wmich.edu/merzetate/academics/support/success/zone>

Learning Assistant Program

Learning Assistants:

- Are embedded in the course and attend alongside students
- Partner with the instructor to facilitate interactive learning experiences in the classroom
- Facilitate three weekly review sessions
- Support development of study techniques

Instructors who wish to have an LA assigned to their course apply each semester.

<https://wmich.edu/merzetate/academics/support/success/assistant>

Peer Academic Success Coaching Program

Student participants in the peer coaching program receive:

- Two hours of one-on-one sessions each week
- Individualized content tutoring
- Help developing short-term and long-term goals
- Accountability for progress made toward identified goals
- Assistance with specific academic issues and study strategies
- Creating connections to additional university and departmental resources

<https://wmich.edu/merzetate/academics/support/success/peer>

Peer Navigator Program

The Peer Navigator Program is the outreach arm of Student Success Services designed to help **every student at WMU** succeed holistically via targeted phone calls, text messages and emails, including some of the following:

- First semester contacts welcome students to campus and offer assistance, if needed
- Not attending, missing assignments, or low-grade alerts triggered by faculty allow peer navigators to check in on students, listen to concerns, and provide resources
- Not registered for next semester alerts give peer navigators the opportunity to help students connect with their advisors and other professional staff

Proactive and caring support, because every student matters!

wmich.edu/navigator

Commonly Used WMU Resources

Disability Services for Students	Disability Services for Students at Western Michigan University strives to make education accessible and remove barriers to student success.
Math Tutor Lab	One-on-one and group tutoring for many math courses.
Essential Needs	Helps support students by reducing basic need and insecurities, like food and period products.
TRIO	Learning community funded by the U.S. Department of Education that helps first-generation, income eligible and students with disabilities complete their baccalaureate degrees.
University Ombuds	Listens to you and discusses your problems and concerns, identifying and evaluating with you options to resolve problems.
Writing Center	Service dedicated to helping individuals better understand, apply and develop writing abilities through one-to-one, client consultations and genre specific workshops.

Navigator Network Specialist

<https://wmich.edu/navigator>



Michelle Brown



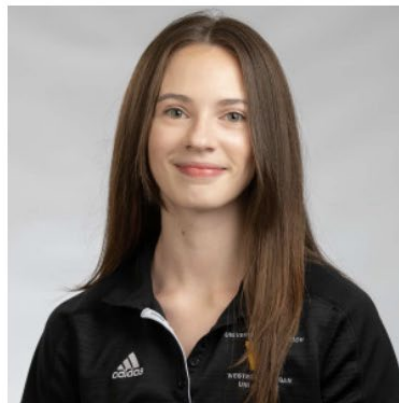
Jordan Johnson



Eron Lauchie



Noemi Mendez



Maddy Mularski



Tim Smolenski



Bryan Wright

Michelle Brown, Navigation Specialist

Case Management

Navigation Specialist

- **Peer Conflict**
- **Academic anxiety**
- **Mental health resources**
- **Food and other basic needs**
- **Adjusting to college**



Navigation Specialists, Multicultural Affairs

Multicultural Affairs for Students

Navigation Specialists

- **Coaching plans**
- **Clifton Strengths**
- **Semester progress review**
- **Student Support**



Jordan Johnson



Noemi Mendez



Tim Smolenski



Eron Lauchie, Navigation Specialist

Student Engagement

Navigation Specialist

- **Connecting with RSOs**
- **Campus events**
- **Grow your RSO**

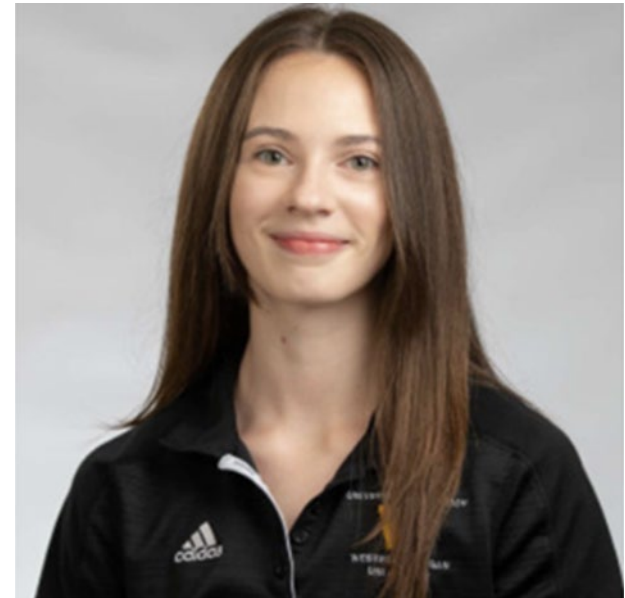


Maddy Mularski, Navigation Specialist

Fitness and Wellness

Navigation Specialist

- Start your fitness journey
- Fitness and/or wellness check-ins, assessments and coaching sessions
- Learn more about the Student Recreation Center (SRC) and/or Health Promotion and Education (HPE)



Bryan Wright, Navigation Specialist

Financial Aid

Navigation Specialist

- My bill
- Financial resources
- Holds
- SAP (satisfactory academic progress) appeal



How can you aid in your Student's Success?

- Encourage them to attend all classes
- Have them check their [wmich.edu](mailto:w@wmich.edu) email several times daily.
(This the most common way the university will contact them)
- Remind them to schedule their study times (good rule is 2X the number of credit hours or 3X for a very challenging course)
- Encourage them to talk to their academic advisors regularly
- Encourage them to use their instructor's office hours

How can you aid in your Student's Success, Continued...

- Encourage them to seek help early, before their grade is faltering
- Have them check their grades often
- Encourage them to experiment with different study strategies or different environments
- Make sure your student is getting enough sleep and good nutrition
- Help them make the most of WMU by engaging in campus activities, resources, and by asking for help when needed

Contact Information

wmich.edu/merzetate/academics/support/success/navigator



Anika Mosharrat
Peer Coaching Program
Manager,
Anika.mosharrat@wmich.edu



Michelle Ringle
Bronco Study Zone Program Manager
(Michelle.E.Ringle@wmich.edu)



Alyssa Ouding
Learning Assistant Program Specialist
alyssa.m.ouding@wmich.edu



Amy Degner- Petillon
Administrative Assistant,
amy.petillon@wmich.edu

Contact Information for Student Success Navigators

<https://wmich.edu/merzetate/academics/support/success>



DebbieLynn Mayo
Student Success Navigator
(269) 387-0042
DebbieLynn.Mayo@wmich.edu



Alicia Anderson
Student Success Navigator
(269) 387-0041
Alicia.N.Gipson@wmich.edu



Nesha Nesbitt
Student Success Navigator
269-387-4403
ednesha.l.nesbitt@wmich.edu



Kathleen Robertson King
Student Success Navigator
(269) 387-4416
kathleen.king@wmich.edu



QUESTIONS?



WESTERN MICHIGAN UNIVERSITY

+=JR= 29L= ! GD?=-

1IM=FL1M; =KK1=JNA=K