

Succeeding at WMU



WESTERN MICHIGAN UNIVERSITY

Student Success Services (S3) Motto:

“Asking for help is a sign of strength, not weakness.”



Academic Support Programs

- [Alpha Program](#)
- [Bronco Study Zone](#)
- [College Assistance Migrant Program](#)
- [College of Education and Human Development Student Success](#)
- [College of Engineering and Applied Sciences Student Success Centers](#)
- [College of Health and Human Services Learning Resource Center & Office of Student Engagement & Success](#)
- [Foundation Scholars](#)
- [Kalamazoo Promise Scholars Program](#)
- [Learning Assistant Program](#)
- [Lee Honors College Peer Student Success Team](#)
- [Math Tutor Lab](#)
- [Mentoring for Success Program](#)
- [Military and Veteran Affairs](#)
- [MLK Jr. Student Scholars Academy](#)
- [Peer Academic Success Coaching](#)
- [Peer2Peer](#)
- [Physics Help Room](#)
- [Precollege Programming](#)
- [Reclaim the W](#)
- [Registrar's Office](#)
- [Seita Scholars Program](#)
- [Service Learning](#)
- [Statistics Tutor Lab](#)
- [STEP Student Success Centers](#)
- [Supplemental Instruction](#)
- [Transfer Student Services](#)
- [TRIO Future Educator Success Program](#)
- [TRiO Student Success Program](#)
- [Writing Center](#)

wmich.edu/student-services/academic-support

Student Success Services

Student Success Services (S3) provides comprehensive academic support programs and connects students to resources to achieve their academic and personal goals.



**Course Assistant
Program**



**Learning Assistant
Program**



**Peer Academic
Success Coaching**



Peer Navigator Program



Course Assistant Program



Free drop-in course assistance is offered **in-person** at the **Bronco Study Zone** in Rood Hall and **virtually** on the Academic Support Hub in Microsoft Teams. We provide course assistance for over **200 courses**.

<https://wmich.edu/merzetate/academics/support/success/zone>

Learning Assistant Program

Learning Assistants:

- Are embedded in the course and attend alongside students
- Partner with the instructor to facilitate interactive learning experiences in the classroom
- Facilitate three weekly review sessions
- Support development of study techniques

Instructors who wish to have an LA assigned to their course apply each semester.

<https://wmich.edu/merzetate/academics/support/success/assistant>

Peer Academic Success Coaching Program

Students participating in the peer coaching program receive:

- Two hours of one-on-one sessions each week
- Individualized content tutoring
- Assistance in developing short-term and long-term goals
- Accountability for progress made toward identified goals
- Assistance with specific academic issues and study strategies
- Assistance with connections to additional university and departmental resources.

<https://wmich.edu/merzetate/academics/support/success/peer>

Peer Navigator Program

The Peer Navigator Program is a response team of Student Success Services that desires **every student at WMU** to succeed holistically.

The program is there for you to help you navigate the university, guide you to resources, and help you thrive in your journey at WMU.

Need help? Not sure where to go?
Give the Navigators a call!

wmich.edu/navigator

Commonly Used WMU Resources

Disability Services for Students

Disability Services for Students at Western Michigan University strives to make education accessible and remove barriers to student success.

Math Tutor Lab

One-on-one and group tutoring for many math courses

Essential Needs

Helps support students by reducing basic need and insecurities, like food and period products.

STEP Student Success Centers

Provides tutoring to all students FREE of charge for math, physics, chemistry, computer science, and most engineering subjects.

TRIO

Learning community funded by the U.S. Department of Education that helps first-generation, income eligible and students with disabilities complete their baccalaureate degrees.

University Ombuds

Listens to you and discusses your problems and concerns, identifying and evaluating with you options to resolve problems. (IE grade

Writing Center

Service dedicated to helping individuals better understand, apply and develop writing abilities through one-to-one, client consultations and genre specific workshops.

Navigator Network

<https://wmich.edu/navigator>



Michelle Brown



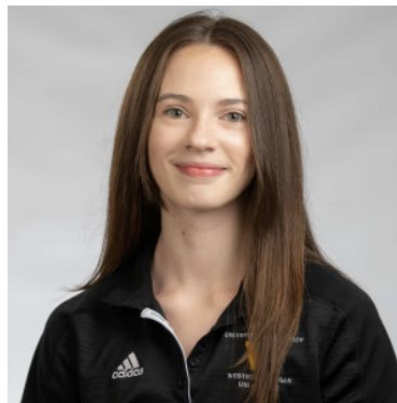
Jordan Johnson



Eron Lauchie



Noemi Mendez



Maddy Mularski



Tim Smolenski



Bryan Wright

Michelle Brown

Case Management

Navigation Specialist

- **Peer Conflict**
- **Academic anxiety**
- **Mental health resources**
- **Food and other basic needs**
- **Adjusting to college**



Multicultural Affairs For Students

Navigation Specialists

- **Coaching plans**
- **Clifton Strengths**
- **Semester progress review**
- **Student Support**



Jordan Johnson



Noemi Mendez



Tim Smolenski



Eron Lauchie

Student Engagement

Navigation Specialist

- **Connecting with RSOs**
- **Campus events**
- **Grow your RSO**

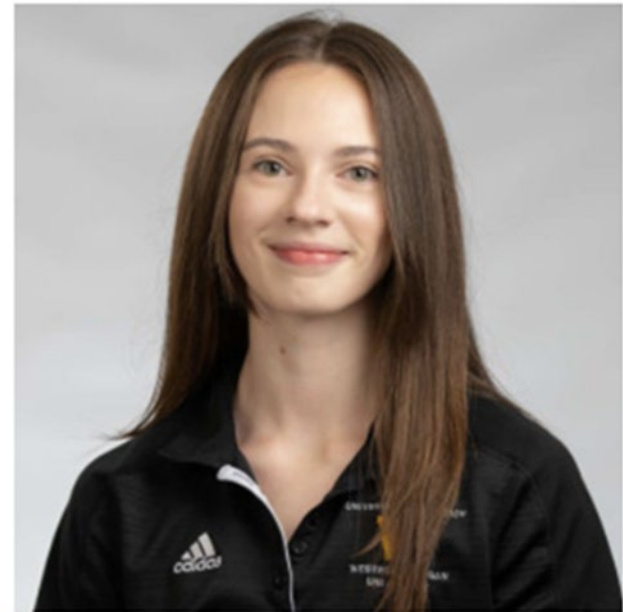


Maddy Mularski

Fitness and Wellness

Navigation Specialist

- Start your fitness journey
- Fitness and/or wellness check-ins, assessments and coaching sessions
- Learn more about the Student Recreation Center (SRC) and/or Health Promotion and Education (HPE)



Bryan Wright

Financial Aid

Navigation Specialist

- My bill
- Financial resources
- Holds
- SAP (satisfactory academic progress) appeal



How can you aid in your Student's Success?

- Encourage them to attend all classes!
- Have them check their wmich.edu email several times daily.
 - (This the most common way the university will contact them)
- Remind them to schedule their study times (good rule is 2X the number of credit hours or 3X for a very challenging course)
- Encourage them to talk to their academic advisors regularly
- Encourage them to use their instructor's office hours

How can you aid in your Student's Success?

- Encourage them to seek help early, before their grade is faltering
- Have them check their grades frequently
- Encourage them to experiment with different study strategies or different environments
- Make sure your student is getting enough sleep and good nutrition.
- Help them make the most of WMU by engaging in campus activities, resources, and by asking for help when needed.

Contact Information

wmich.edu/merzetate/academics/support/success/navigator



Katie Easley

Director of Student Success Services
katie.e.easley@wmich.edu



Michelle Ringle

Bronco Study Zone Program Manager
(Michelle.E.Ringle@wmich.edu)



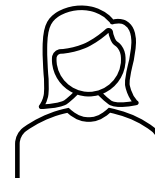
Alyssa Ouding

Learning Assistant Program Specialist
alyssa.m.ouding@wmich.edu



Amy Degner- Petillon

Administrative Assistant,
amy.petillon@wmich.edu



In Coming

Peer Coaching Program
Manager



Contact Information

<https://wmich.edu/merzetate/academics/support/success>



DebbieLynn Mayo
Student Success Navigator
(269) 387-0042
DebbieLynn.Mayo@wmich.edu



Alicia Anderson
Student Success Navigator
(269) 387-0041
Alicia.N.Gipson@wmich.edu



Nesha Nesbitt
Student Success Navigator
269-387-4403
ednesha.l.nesbitt@wmich.edu



Kathleen Robertson King
Student Success Navigator
(269) 387-4416
kathleen.king@wmich.edu



QUESTIONS?



WESTERN MICHIGAN UNIVERSITY